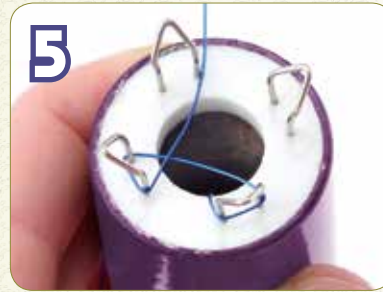




1 Thread the end of your wire down through the hole in the center of the tool.



5 Wrap the wire counter-clockwise around the 9:00 spoke, and to the right of the 12:00 spoke.



2 Pull the wire down about 5 inches.



6 Wrap the wire counter-clockwise around the 12:00 spoke, and bring it down underneath the 3:00 spoke.



3 Bend the wire up and hold it against the side of the tool with your left hand. It is helpful to think of the spokes as the face of a clock. While holding the wire in your right hand, start to the left of 6:00 and wrap the wire around the spoke counter-clockwise.



7 Wrap the wire counter-clockwise around the 3:00 spoke, and bring it to the left of the 6:00 spoke.



4 Bring the wire to the top of the 9:00 spoke.



8 Continue wrapping the wire counter-clockwise around the 6:00 spoke and bring it to the top of the 9:00 spoke.



9
Wrap again around the 9:00 spoke and up to the 12:00 spoke.



13
Use the Beading Awl to pull the bottom loop up over the top loop and over the top of the spoke.



10
Wrap the wire around the 12:00 spoke and down to the 3:00 spoke.



14
After each stitch, give the bottom wire a gentle tug to tighten the stitch and maintain the shape of the knitted rope.



11
Wrap again around the 3:00 spoke down to the 6:00 spoke. Hold the wire to the right of the 6:00 spoke.



15
Repeat steps 10-16 until your knitted rope is the desired length. After several stitches, your knitted rope will emerge from the bottom of the tool.



12
Insert a Beading Awl under the bottom loop.



Always use safety glasses when working with wire and wire tools. Intended for adult use only.
Portez des lunettes protectrices en tout temps lorsque vous travaillez avec des fils et des outils pour fil. Ne doit être utilisé que par des adultes.
Utilice gafas protectoras en todo momento al trabajar con alambres y herramientas de alambre. Uso destinado sólo para adultos.



For Designs, Instructions, & Videos, Go To:
Pour consulter les modèles, les directives et les vidéos, veuillez visiter:
Para consultar diseños, instrucciones y videos, visite:
www.beadalon.com/tools/2285-434.asp